

CERTIFICATE OF LOCATION OF GOVERNMENT CORNER

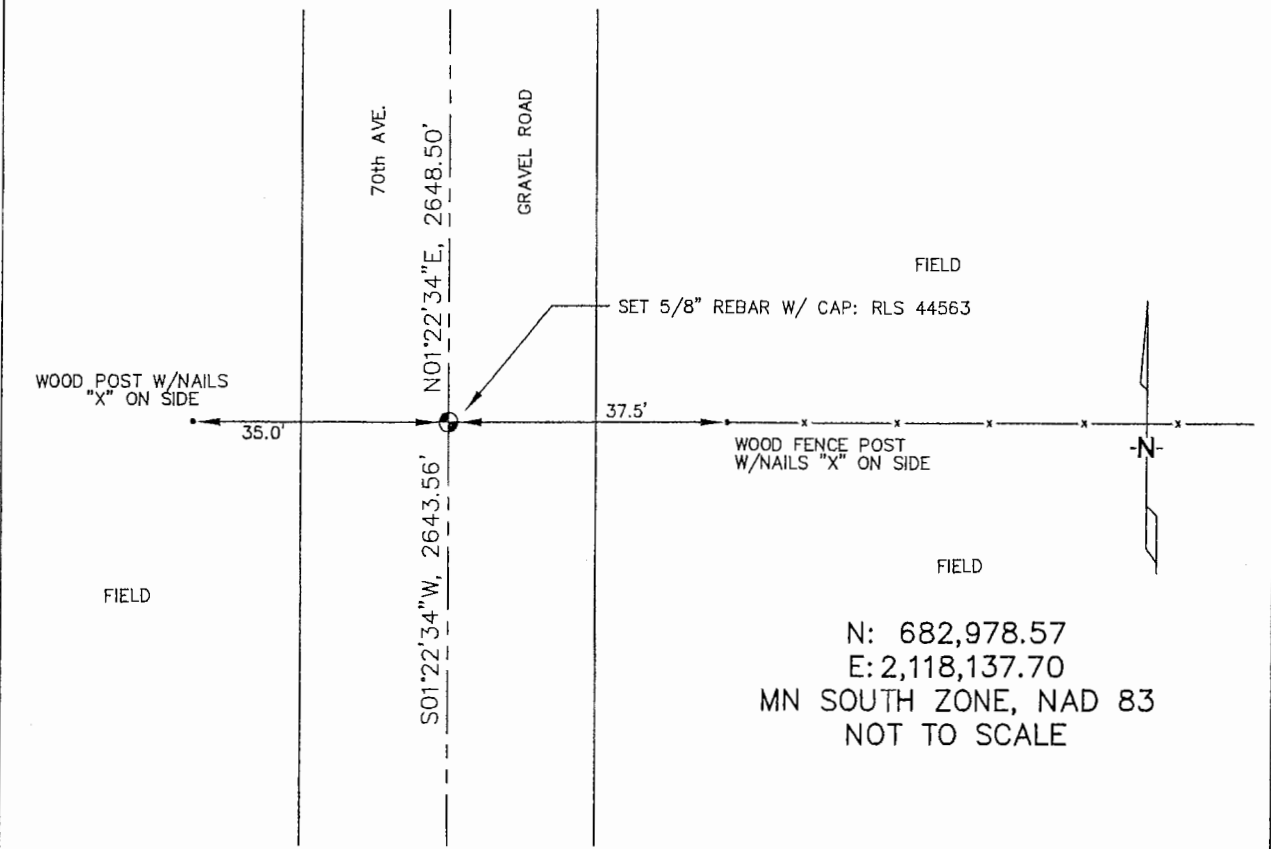
WEST 1/4 _____ Corner of Section 29, Township 106, Range 42, 5TH P.M.

STATE OF MINNESOTA, County of MURRAY

At the corner location shown on the sketch :

- On _____ found _____
- left monument as found, lowered monument, removed monument (explain)
- On 3/22/2006 set a 5/8" rebar with cap: RLS 44563, in C/L of gravel road, opposite fence line running east.

Sketch of reference ties



Statement of evidence relative to this corner location is on back page

I hereby certify that this document and the data contained herein was prepared by me or under my direct supervision.

Thomas V. Jeff 6/29/06
 Thomas V. Jeff Date

- Registration No. 44563
- Land Surveyor, Professional Engineer
- County Surveyor, County Engineer

OFFICE OF THE COUNTY RECORDER
 County of _____

SEP 28 2006

I hereby certify that this document was filed in the Co. Recorders office at _____ .M. on the _____ day of _____ A.D. , 20

County Recorder James V. Johnson
 By _____, Deputy

DOCUMENT NO. _____

STATEMENT OF EVIDENCE:

WEST 1/4 CORNER, SECTION 29, T. 106 N., R. 42 W.,
MURRAY COUNTY, MINNESOTA

1866 J.W. Bishop, US. Deputy Surveyor, monumented corner.

3/21/2006 Ulteig Engineers, Inc., Survey Crew, Brain Payne Party Chief,
found nothing. Set a 5/8" rebar with cap: RLS 44563 in C/L of
road opposite a fence line running east.

Ties: W-35.0' to nailed "X" in wood post;
E-37.5' to nailed "X" in fence post;
N-2648.50' to NW corner, Section 29;
S-2643.56' to SW corner, Section 29.